

STATE OF FLORIDA
County of Palm Beach
The following is a true and correct copy of the original of the same as shown to me by the undersigned on this day of March 1926
Notary Public
Geo. E. Jones

1000-633

MEERDINK'S LITTLE RANCHES

A SUBDIVISION
SITUATED IN THE N.E. 1/4 OF SECTION 30,
TOWNSHIP 43-S, RANGE 43-E.
WEST PALM BEACH PALM BEACH COUNTY, FLORIDA

SCALE 1"=100' JANUARY, 1925



DESCRIPTION

That piece of land in Section 30, Township 43-South, Range 43-East, lying East of a certain plat of West Gate Estates filed in the Office of the Clerk of the Circuit Court of Palm Beach County, Florida, in Plat Book E, page 38, bounded on the North by a canal known as Lateral No. 1, on the West by Canal E-31a, on the South by Lateral No. 2, and on the East by the North and South Section Line between Sections 29 and 30, Township 43-South, Range 43-East, said land containing thirteen (13) acres more or less and subject to easements and rights-of-way of the Lake Worth Drainage District and prior deeds.

ACKNOWLEDGEMENT

STATE OF FLORIDA
COUNTY OF PALM BEACH
I, the undersigned an officer duly authorized to administer oaths and take acknowledgements, do hereby certify that on this day personally appeared before me C. J. MEERDINK and his wife LUCRETIA MEERDINK, to me well known to be the persons described and who executed the foregoing instrument and acknowledged to and before me that they executed the same for the uses and purposes therein expressed.

I FURTHER CERTIFY that the said LUCRETIA MEERDINK, known to me to be the said wife of the said C. J. MEERDINK, on a separate and private examination taken and made by and before me separately and apart from her said husband did acknowledge that she executed the same freely and voluntarily and without compulsion, fear, apprehension or constraint of or from her said husband.

WITNESS my hand and official seal this 20th day of January A.D. 1926
My commission expires Oct. 22 1927
Notary Public

DEDICATION

STATE OF FLORIDA
COUNTY OF PALM BEACH
KNOW ALL MEN BY THESE PRESENTS that C. J. MEERDINK and his wife LUCRETIA MEERDINK, the owners in fee simple of the tract of land shown on the attached plat as "MEERDINK'S LITTLE RANCHES" and more particularly described in Description Herein caused the same to be surveyed and plotted as shown on the attached plat, and do hereby dedicate to the perpetual use of the public as public highway the Streets, Roads and Avenues as shown on the attached plat, reserving however unto themselves, their heirs, successors, assigns or legal representatives the reversion, or reversions thereof wherever the same shall be abandoned by the public or discontinued by law.

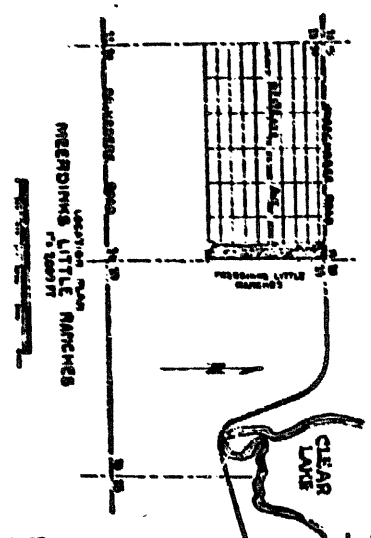
IN WITNESS WHEREOF, we have hereunto set our hands and seals this 22nd day of January A.D. 1926
Witness
C. J. Meerdink
Lucretia Meerdink

AFFIDAVIT

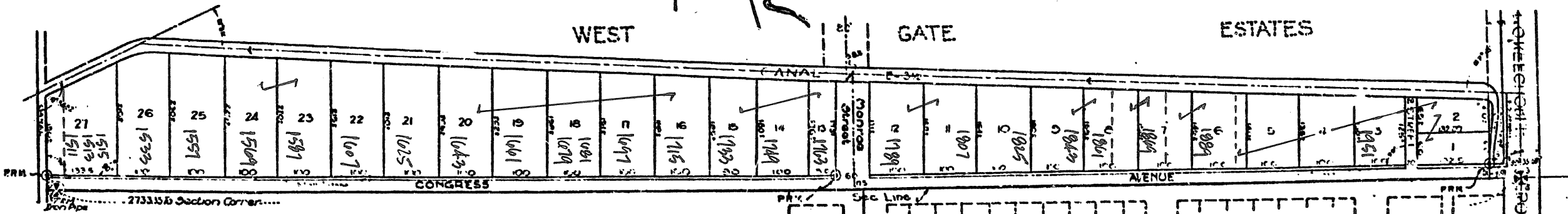
STATE OF FLORIDA
COUNTY OF PALM BEACH
WE HEREBY CERTIFY, that we have surveyed and plotted the tract of land shown on the attached plat as "MEERDINK'S LITTLE RANCHES" and that said plat is a correct representation thereof to the best of our knowledge and belief and permanent reference monuments have been placed as required by law.

CARR & McFADDEN, INC.
By
FLA STATE ENG. CERT. NO. 712

Subscribed and sworn to before me this 26th day of January A.D. 1926
My commission expires
Notary Public



Note
Six (6) foot Parkway
Congress Ave. - Four (4) foot Sidewalks
Fourteen (14) foot Paving
Okeechobee Road - Five (5) foot Sidewalks
Marree Street - Thirty (30) foot Paving
Building Lines - Twenty (20) feet from property line



Approved Board of County Commissioners
By
County Engineer

Approved:
By
Attorney

Approved
City Manager
Approved City Planning Board
Chairman

FIELD NOTES IN BOOK P-2, PAGE 7
SURVEY BY J. L. LAG BY J. S. M. P.
MEERDINK'S LITTLE RANCHES
CARR & McFADDEN, INC.
CIVIL ENGINEERS
114 ING. CENTS. NOS. 121 & 120
WEST PALM BEACH, FLORIDA